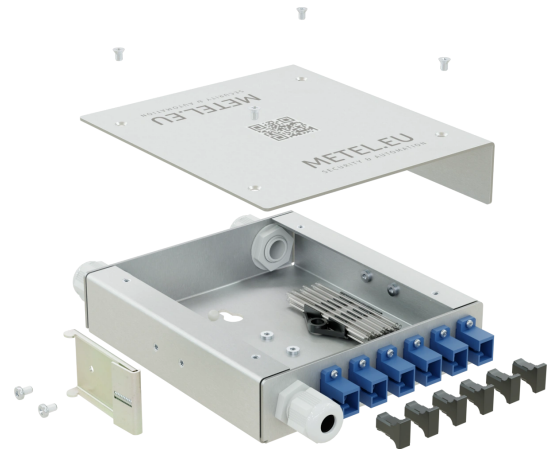


Outdoor switchboards

OBA-DIN

- Safe fixation of connected cables / pigtails and protection of optical welds
- Attaching up to 12 optical welds + connecting up to 12 optical pigtails
- Option with LC or SC connectors
- 3x PG9 grommet
- Easy installation and maintenance
- Mounting on DIN35
- Suitable for switchboards of the OH4320, OH6425, OH7525, OH8625 series



Aluminum fiber optic box for easy connection of fiber optic cables, mounting of up to 12 fiber optic welds and mounting of up to 12 pigtails. Secure fixation of connected cables / pigtails and protection of optical welds. Easy installation and maintenance. Suitable for OH4320, OH6425, OH7525 and OH8625 series switchgear.

Available models

Order name	Order code
OBA6-SC-DIN	4-500-050
OBA6-LC-DIN	4-500-051
OBA4-SC-DIN	4-500-052



Technical parameters

Optical box	
Material	Aluminium
Number of optical welds	Max. 12
Installation	DIN35 or flat surface
Dimensions - w / h / d	33 / 190 / 130 mm
Grommet	3x PG9
Number of optical couplers OBA4 / OBA6	4 / 6

Standards and protocols

Standard	Note
----------	------

EMC and safety

Standard	Level	Note
----------	-------	------

Notes

- The manufacturer reserves the right to change technical parameters without prior notice.

Document created on 04/24/2026 05:28AM:43

Dimensions

